

Monroe A. Miller, Jr.
2200 Camp Branch Road
Waynesville, NC 28786
July 4, 2020

Subject: Coronavirus Plots.

It is interesting to examine graphical plots of various aspects of the coronavirus (also known as the Wuhan virus) and relate them to the hysteria from left wing **news** [term used with a grain of salt] organizations.

[Editor's Note: Due to the limitations of fitting data onto an 8 ½ x 11 inch graph paper, I opted not to use my very expensive Green Graph Paper, otherwise I would have exhausted my precious supply by now.]

Data used to plot this data is only as good as the source(s) it comes from. Following the old engineering axiom: "Garbage In - Garbage Out". The only two sources I have used are:

- Center for Systems Science and Engineering (CSSE) at Johns Hopkins University,

<https://gisanddata.maps.arcgis.com/apps/opsdashboard/index.html#/bda7594740fd40299423467b48e9ecf6>

- Worldometers.

<https://www.worldometers.info/coronavirus/>

These sources are completely dependent on every variation in the book, so who knows how accurate they are. However, when you plot the data from these sources, they appear to be consistent with each other. You have to hang your hat on something.

I have been plotting data on coronavirus since March 8, 2020, when there were 484 cases reported and 19 deaths to date. Nearly every projection by anyone has been wrong, therefore, any projections being made today by anyone should have the same level of credibility, i.e. they are likely to be wrong.

The data and plots shown here are from June 18, 2020 through July 4, 2020.

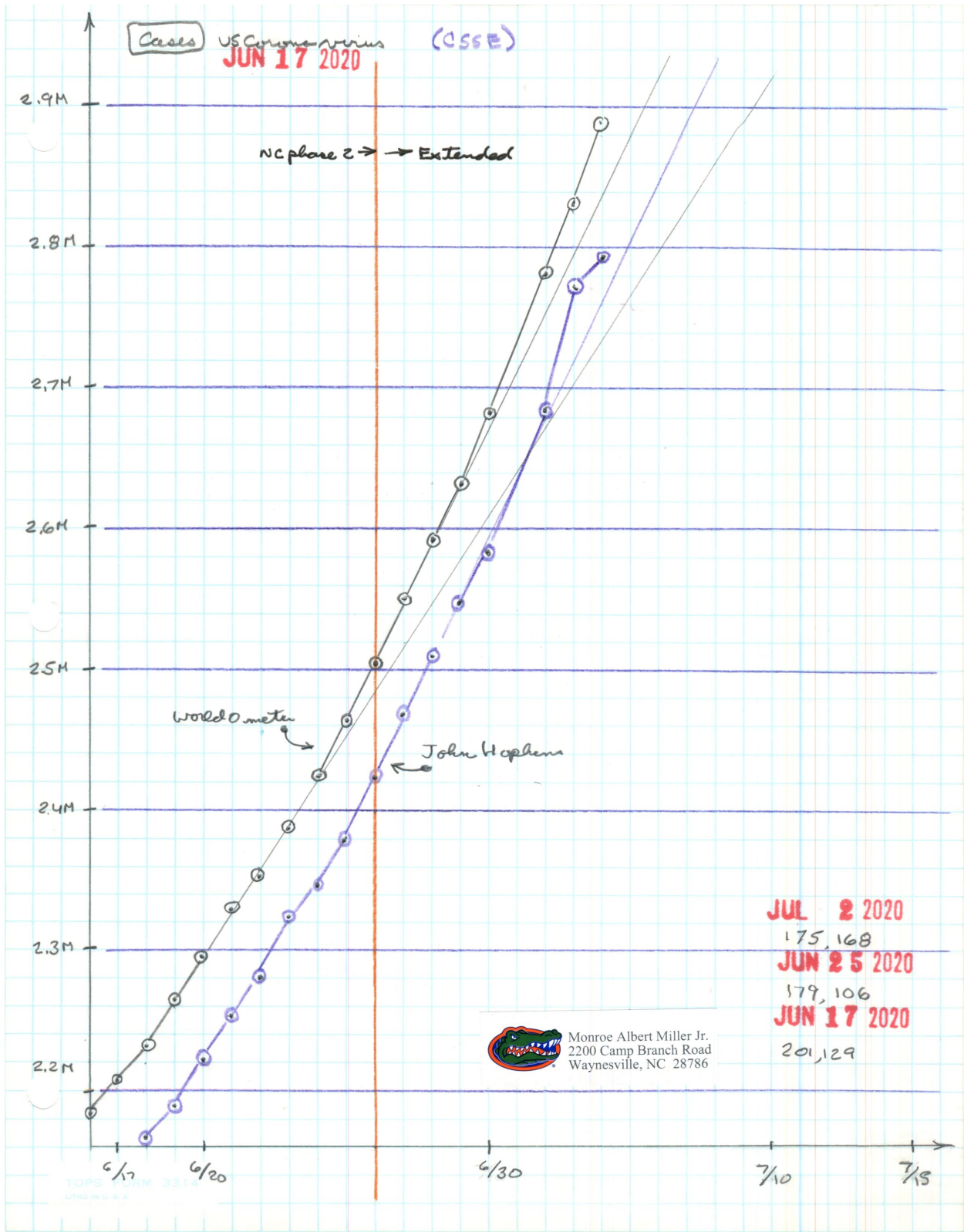
	Cases	US cases (CSSE)	Deaths
JUN 18 2020	2,234,854	(2,163,296)	119,943
JUN 19 2020	2,263,982	(2,191,200)	120,688
JUN 20 2020	2,297,642	(2,222,576)	121,407
JUN 21 2020	2,330,769	(2,255,119)	121,983
JUN 22 2020	2,356,715	(2,280,969)	122,249
JUN 23 2020	2,388,225	(2,312,302)	122,611
JUN 24 2020	2,424,493	(2,347,102)	123,476
JUN 25 2020	2,462,958	(2,381,369)	124,294
JUN 26 2020	2,504,676	(2,422,312)	126,785
JUN 27 2020	2,553,686	(2,467,837)	127,649
JUN 28 2020	2,596,894	(2,510,323)	128,153
	2,621,662	(2,534,981)	128,315
JUN 29 2020	2,637,180	(2,549,069)	128,438
JUN 30 2020	2,683,304	(2,683,000)	128,819
: Annette ☺			
JUL 2 2020	2,780,152	(2,686,587)	130,798
JUL 3 2020	2,837,612	(2,739,879)	131,503
JUL 4 2020	2,891,267	(2,795,163)	132,112

First column is date.

Second Column is cases, from Worldometers

Third Column is cases from (CSSE)

Forth Column is deaths from Worldometers.



Legend - Cases.

X-axis is date.

Y-axis is number of cases

Black curve is from Worldometers

Violet curve is from (CSSE)

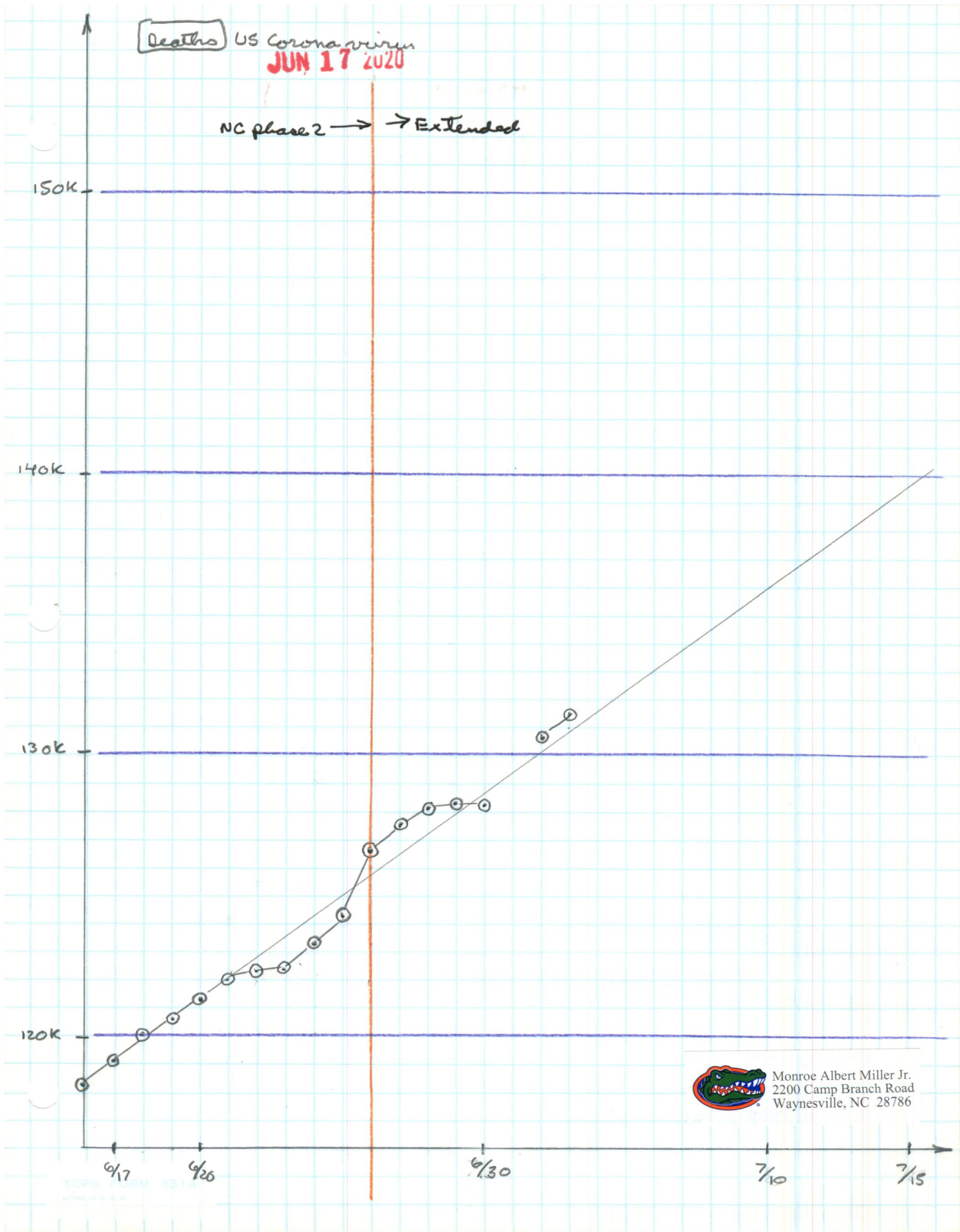
Orange vertical line is when Cooper was supposed to end Phase 2 restrictions.

Prior to the orange date, 6/26/2020, both sources showed a fairly consistent slope, as did the previous data on prior graphs. About a month ago, Worldometers and (CSSE) started to diverge in the total number of cases by about 800K.

After the orange date, there has been a change in the slope (increase). Based on available data, I attribute these to:

- Increase in the number of tests being conducted,
- All of the close contact people are having with the riots associated with George Floyd (i.e. BLM). Indications are that younger people are becoming more affected.

The several dates and numbers located at the bottom left of the plot are taken from Worldometers, and were captured at various dates, with their projection of total number of people that were going to die from the Wuhan virus. As you can see, it is all over the map, but interestingly, the number is steadily decreasing.



Legend - Deaths

Same x and y axis designations as used in the Cases plot.

Single plot is from Worldometers.

Same orange vertical line indicating when Cooper's Phase 2 was supposed to end.

Analysis.

Well guess what!

There is no change in the slope of the data. WTF?

There are several possibilities for that.

- It takes time for more people to die after catching the virus, i.e. a time delay.
- Bad data? (Garbage in - Garbage out)?
- Hysteria created by Left Wing news media has no relationship to deaths.

Let's see where this goes. I will continue to plot data and update if there is anything interesting.

Monroe A. Miller, Jr.
Haywood County Taxpayer
Haywood Five